

SCREENING RESULTS: GRADING CLASSIFICATION

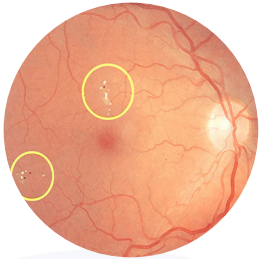
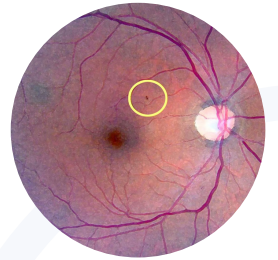


No Diabetic Retinopathy

– Images appear normal.

Background diabetic retinopathy

– small changes spotted but they aren't of concern. Sometimes features appear and disappear, so it doesn't necessarily mean there is a problem.

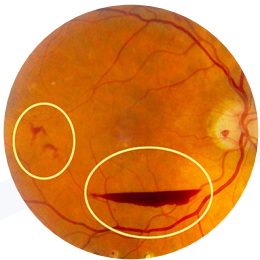


Diabetic maculopathy (Routine referral)

– Small changes spotted within the macular area. We may refer the patient to the hospital eye service for further investigation. For early-stage changes or less severe changes, the patient may continue to be monitored by diabetic eye screening in the community.

Preproliferative diabetic retinopathy (Routine referral)

– changes were spotted that need further investigation. We may refer the patient to the hospital eye service. For early-stage changes or less severe changes, the patient may continue to be monitored by diabetic eye screening in the community.

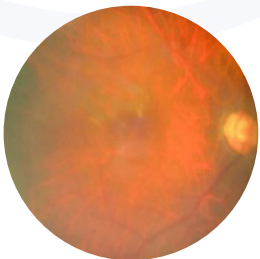
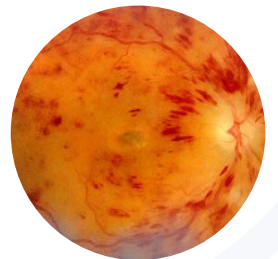


Sight Threatening Diabetic Retinopathy (Urgent referral)

– large changes were spotted that need prompt further investigation. We will refer the patient quickly to the hospital eye service to ensure no more damage is caused.

Non-Diabetic Eye Diseases

– occasionally during the screening test we will find non-diabetic eye conditions. We will refer patients to the hospital if needed and report our findings to your GP as they may already be aware of the condition.



Unassessable Results

– there are a number of reasons why we may get an unassessable image for example, the lens of the eye is too cloudy due to cataract. We will refer you for a Slit Lamp examination, which allows a Specialist to assess the back of your eye.